



Your Reliable Power Partner



System Power Solution

*Integrating Digital Rack Power, Charger and Controller
for Industrial Applications*

Taiwan (Headquarters)

MEAN WELL ENTERPRISES CO., LTD.

Tel +886-2-2299-6100(rep.) e-mail info@meanwell.com

U.S.A. (California)

MEAN WELL USA, INC.

Tel +1-510-683-8886 e-mail info@meanwellusa.com

Europe (The Netherlands)

MEAN WELL EUROPE N.V.

Tel +31-20-758-6000 e-mail info@meanwell.eu

China

MEAN WELL (GUANGZHOU) ELECTRONICS CO., LTD.

Tel +86-20-3773-7100 / 400-800-3608(sales)

e-mail info@meanwell.com.cn

SUZHOU MEAN WELL TECHNOLOGY CO., LTD.

Tel +86-512-6508-8600 e-mail info@meanwell.cc

Asia

MEAN WELL MALAYSIA SDN.BHD.

Tel +603-8070-8120 e-mail wswong@meanwellasean.com

MEAN WELL INDIA ELECTRONICS PRIVATE LIMITED

Tel +91-9686-448906 e-mail info@meanwellindia.com

MEAN WELL SINGAPORE PTE. LTD.

Tel +886-2-2299-6100 etc.864 e-mail info@meanwell.com

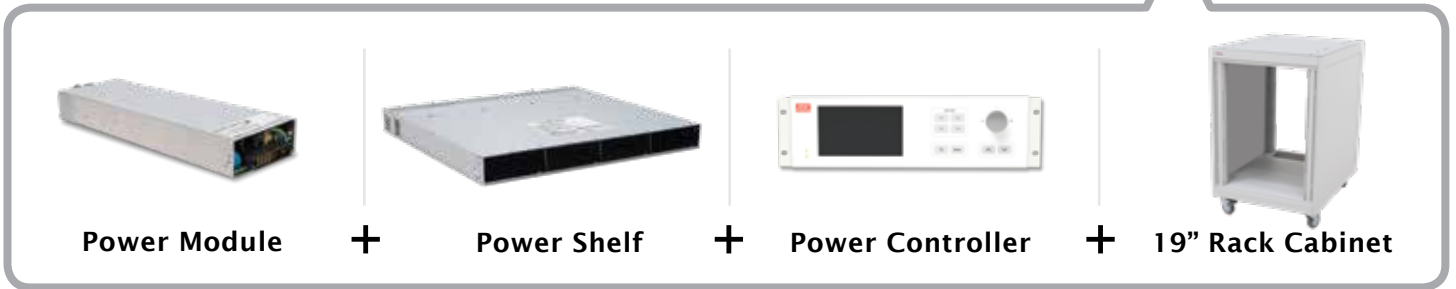
MEAN WELL (HONG KONG) HOLDING LIMITED

Tel +852-2643-9098 e-mail vickiho@meanwell.com.hk



Concept

Possess the benefits to provide flexible solutions, time to market, fast delivery, high cost performance ratio and high reliability, MEAN WELL System Power Solution is now ready to power up your business in multiple industries and diversified applications!



Easy Power Management with Human Machine Interface

MEAN WELL presents the 「CMU2 Digital Master Controller」 to help users manage their power systems with ease. CMU2 supports the CANbus, PMBus, and RS-485/232 communication protocols and it can connect to slave devices such as power supplies, sensors, lighting fixtures and more via wired or wireless network.



▲ CMU2C-R

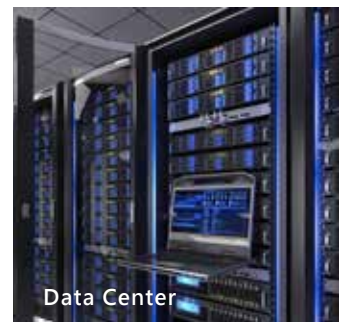
Features of CMU2

- 7" LCD touch panel in both rackmount and standalone versions
- Easy-to-use dial and push buttons (rackmount edition only)
- 3 expansion cards for wired/wireless connection with slave devices
- Control/monitor up to 64 devices and more with expansion cards
- RS-232, RJ45 and USB serial ports for easy wiring
- MicroSD card to save event logs
- Management tool can be accessed via PC/web/handheld-based devices
- 5 years warranty

Web-based GUI



System Power Solution for Multiple Industries



Combination Demonstration

PowerNex Accessories

-  1U/2U/3U Blank Panel
Part No. : RA9AQ
-  1U/2U/3U Vent Panel
Part No. : RA9AR
-  Support Angle
Part No. : RA27904
-  Support Plate
Part No. : RAF9AH01
-  19" Rack Cabinet
Part No. : RA-**U-750

2 DHP-1UT-B



3 NCP-3200 Series



6 ERG-5000 Series



7 NTN-5K Series




UPS Backup System

Energy Burn-i

Cabinet	Model No.	RA-15U-750
	Height (U)	15
	Dimensions (LxWxH)	750x 600x 912 mm
Power Controller	Recommend Model	
Power Shelf	Recommend 1U Model	
Power Module	Recommend 2U Model	
Bidirectional Power Supply	Recommend 1U Model	
Grid Type Inverter	Recommend 2U Model	
Off-Grid Type Inverter	Recommend 2U Model	
Max. Number of Installations (Unit) (with Controller)	1U Model	40
	2U Model	5
Max. Output Power (KW) (Product Rated Power x Maximum Number of Installations)	1U Model	128
	2U Model	150
Application	Energy control system, Battery power re	

Note: We value the information accuracy, if there's any discrepancy

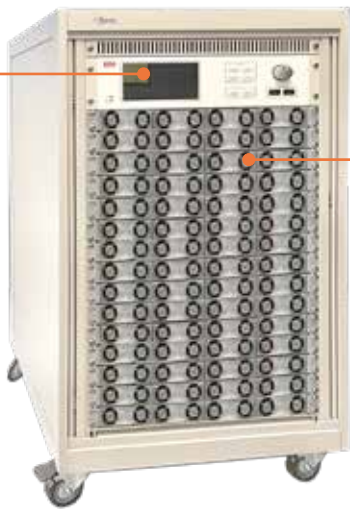
1 CMU2C-R/CMU2A-R/CMU2E



5 BIC-2200 Series



4 SHP-30K Series



Energy Saving
in System

Bidirectional System Power

Programmable DC System Power

RA-22U-750

RA-30U-750

22

30

750x 600x 1224 mm

750x 600x 1579 mm

1 CMU2C-R / CMU2A-R / CMU2E

2 DHP-1UT-B (NCP-3200 series only)

3 NCP-3200 series

4 SHP-30K series

5 BIC-2200 series

6 ERG-5000 series

7 NTN-5K series

72

100

8

12

230

320

240

360

recycling system, Burn-in power recycling system, industrial power system and others.

between the data presented in our brochure and the specification, the specification shall prevail. (Please refer to www.meanwell.com for the latest spec.).

Advantages

Smart Rack Power Solution in Digitalized Design

Remote ON/OFF

This signal allows user to turn on/off power modules all at once or one by one.

Output Programmable Function

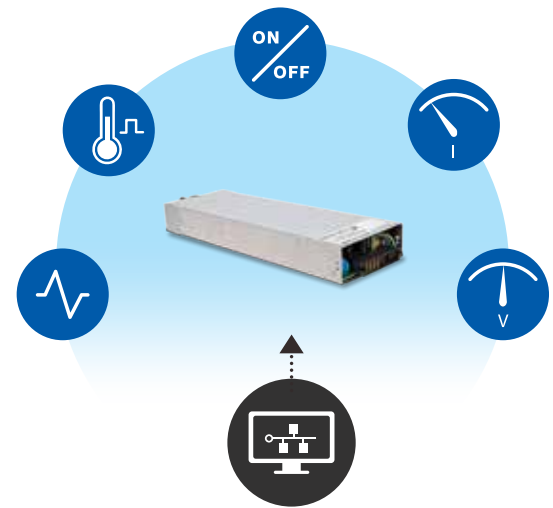
By using external DC signal, output voltage (PV) and constant current limit (PC) can be tuned up or down according to end user's need.

T-alarm

PSU sends out TTL signal to warn probable over-heating event.

Intelligent Control

Featuring multiple I/O signals, programmable outputs and communication to enable easy and smart monitor and control from power supply to the entire power system.



Power Supply in Modular Design

Rack power/charger use connector as interface to fit power modules into power shelf which realizes the key function of "hot swap" and enables power system with flexibility to promptly enlarge output power for future needs.

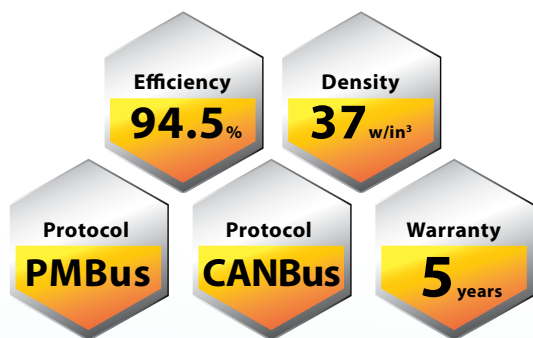
Upgradable and Redundant Power Solution in Building Block Design

Configure power shelves in parallel connection, the total output power can be multiplied and upgradable. Or configure solutions with back-up power in N+1 redundancy. Using off-the-shelf 3200w digitalized power module as the base, MEAN WELL successfully creates a wide range of solutions from 3200w up to 128KW.



The Core of Digital System Power Solution

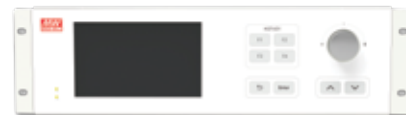
Rack Power NCP-3200 Series + Digital Controller CMU2 Series



Rack Controller

CMU2C-R

L147.5x W127x H41(1U) mm



Power Shelf

DHP-1UT-B (HV)

L400x W440x H44mm



Rack Power/Charger

NCP-3200

L325.8x W107x H41(1U) mm



Features



Power Supply Mode

- Programmable Outputs, PV & PC functions
- Built-in OR-ing FETs to support hot swap
- Active current sharing
- Built-in DC fans forced air cooling
- Protections: Short circuit, over voltage & over temp.
- Optional conformal coating

Battery Charger Mode

- Charge lead-acid (Gel, Flooded & AGM) and Li-Ion batteries
- Built-in 3 three-stage charging curves and 1 programmable curve
- Protections: Battery under voltage, Battery no connection

Model No.	Vin	Output	Efficiency
NCP-3200-24	90~264VAC	24V, 0~133A	93.5%
NCP-3200-48	90~264VAC	48V, 0~67A	94.5%
NCP-3200-380	90~264VAC	380V, 0~9.6A	94%

Model No.	Vin	Output	Efficiency
NCP-3200-24	90~264VAC	28.8V, 0~110A	93.5%
NCP-3200-48	90~264VAC	57.6V, 0~55A	94.5%